

SIZES: XS-XXXL

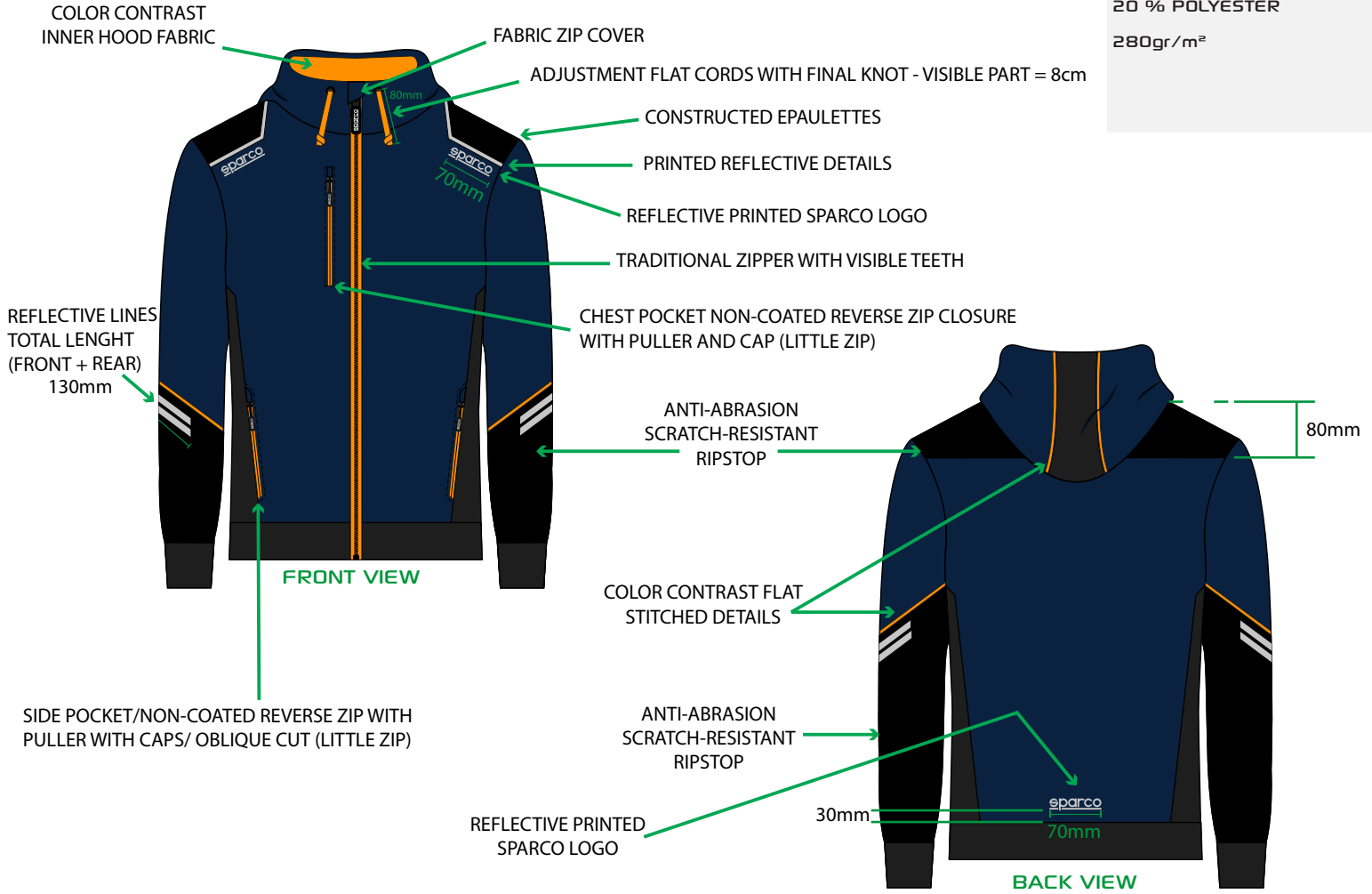
MADE IN: CHINA

DATE: 29-11-2022

TEMPLATE

MATERIALS

COMPOSITION:
80 % COTTON
20 % POLYESTER
280gr/m²



COLOUR RANGE



PRINT DETAILS



LOGO SPARCO REFLECTIVE 70mm + EPAULETTE REFLECTIVE LINES



SPARCO LOGO 70mm ON LOWER BACK



PRINTED REFLECTIVE LINES ON BOTH SLEEVES

PRODUCT MANAGER:

QUALITY MANAGER:

COORDINATOR:

DATE: 29-11-2022

DETAILS



INNER NECK SPARCO LABEL + SIZE LABEL



SPARCO ZIP PULLER + FABRIC ZIP COVER



SIDE POCKETS NON-COATED REVERSE ZIP WITH PULLER



CHEST POCKET NON-COATED REVERSE ZIP WITH PULLER



ANTIABRASION RIPSTOP ON SLEEVES

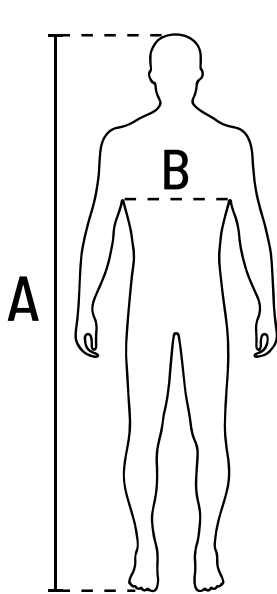


ANTIABRASION RIPSTOP ON UPPER BACK



ADJUSTMENT FLAT CORDS WITH FINAL KNOT

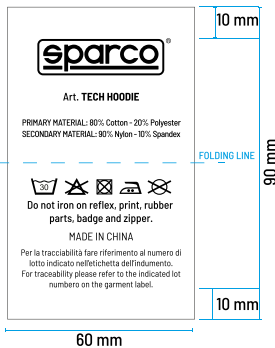
SIZE CHART



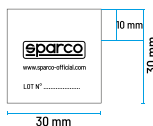
	A ALTEZZA TOTAL HEIGHT	B TORACE CHEST
XS	162-167	82-88
S	167-172	88-94
M	172-178	94-100
L	178-184	100-106
XL	184-190	106-112
2XL	190-196	112-118
3XL	196-209	118-126

INNER LABELS

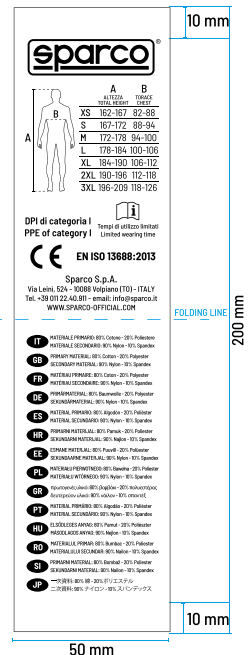
PRIMARY LABEL



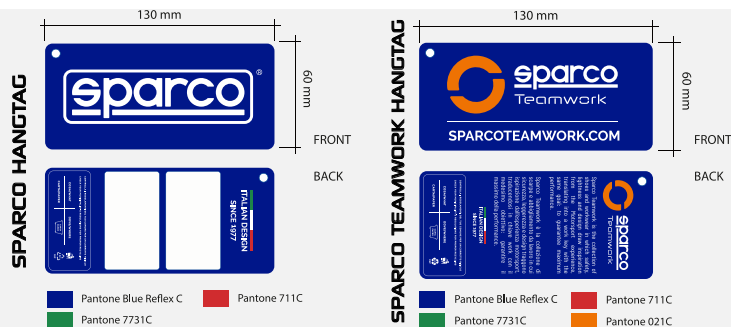
LOT N° LABEL



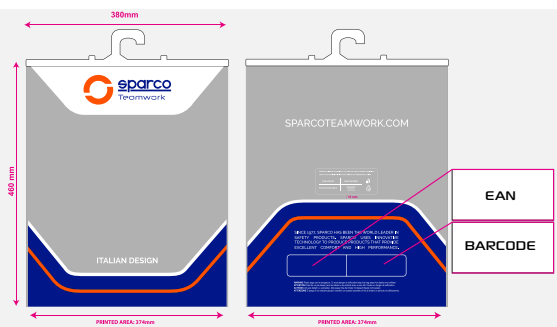
SECONDARY LABEL



HANGTAG



PACKAGING



EAN & BARCODE to be applied on SPARCO HANGTAG and hooked on the clothes

PACKED INSIDE A 380X460MM TEAMWORK POLY BAG WITH WHITE HANGER
EAN & BARCODE to be applied on the designed areas.